

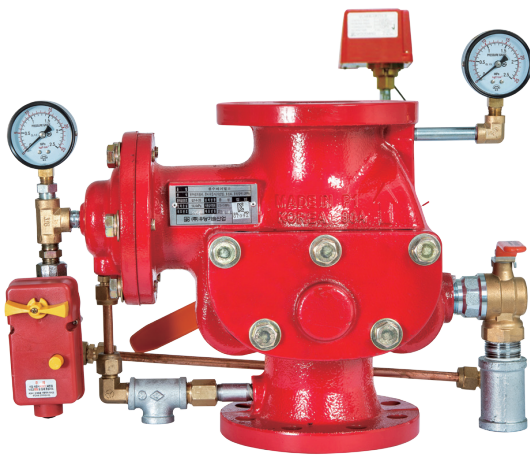
개방형

준비작동식 밸브 AVPV1 / AVPV2 / AVPG1

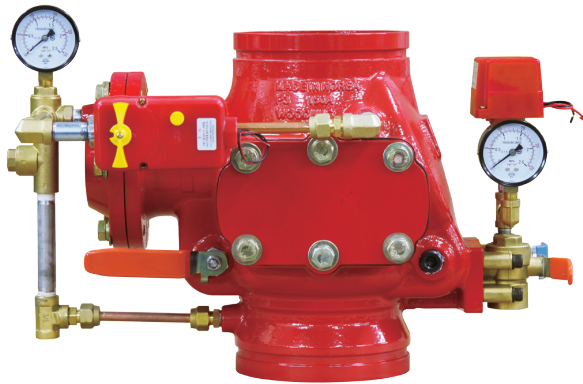
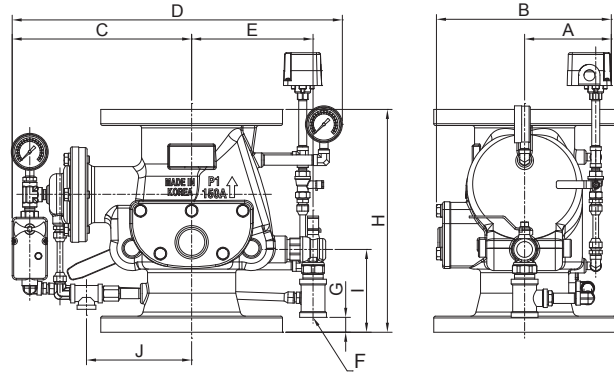
/ 한국소방산업기술원 검정품

■ 제품특징

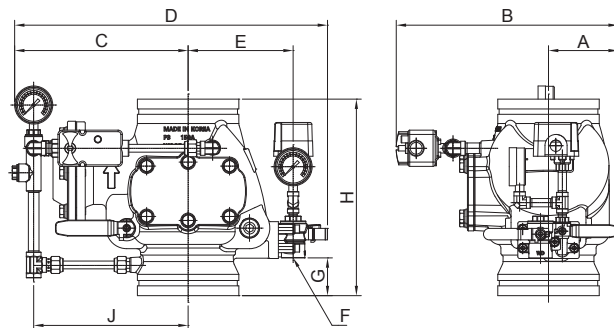
- 조립구조는 수격 및 압력충격을 흡수하여 오작동을 방지하고 밀폐력이 뛰어납니다.
- 전동볼밸브는 자동화재 탐지설비에 의한 전동 및 비상시 인위적인 수동개방이 가능한 다기능 밸브로서, 본체개방 작동을 위한 운전부를 한곳으로 집약시켜 취급이 아주 편리합니다.
- 클래퍼 스윙식으로 제작되어 내부의 마찰손실을 최소화 하도록 설계되어 있습니다.



AVPV1 / AVPV2



AVPG1



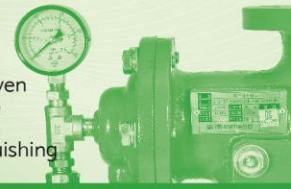
| 모델번호   | AVPV1080~150                               | AVPV2100, 150              | AVPG1080~150         |
|--------|--|----------------------------|----------------------|
| 호칭규격   | 1MPa-80A~150A                              | 1.6MPa-100, 150A           | 1MPa-80A~150A        |
| 사용압력범위 | 0.15 ~ 1.4MPa                              | 0.15 ~ 2.2MPa              | 0.15 ~ 1.4MPa        |
| 접속규격   | KS B 1511<br>10K FF Flange                 | KS B 1511<br>16K FF Flange | KS B 1507<br>그루브 조인트 |
| 작동방식   | 클래퍼 스윙                                     |                            |                      |
| 적용유체   | 물  |                            |                      |
| 재질     | 몸체, 클래퍼 (GCD450 닥타일 주조품)<br>다이하프램/시트 (NBR) |                            |                      |

| 모델번호     | A   | B   | C   | D   | E   | F(DRAIN) | G    | H   | I   | J   | 압력손실     |
|----------|-----|-----|-----|-----|-----|----------|------|-----|-----|-----|----------|
| AVPV1080 | 155 | 266 | 276 | 466 | 166 | 25A      | 9    | 304 | 123 | 147 | 14.4 kPa |
| AVPV1100 | 155 | 266 | 276 | 466 | 166 | 25A      | 9    | 304 | 123 | 147 | 14.2 kPa |
| AVPV1500 | 146 | 294 | 302 | 554 | 204 | 25A      | 25   | 374 | 139 | 172 | 4.6 kPa  |
| AVPV2100 | 155 | 268 | 276 | 466 | 166 | 25A      | 9    | 304 | 123 | 147 | 14.2 kPa |
| AVPV2150 | 146 | 305 | 302 | 554 | 204 | 25A      | 25   | 374 | 139 | 221 | 4.6 kPa  |
| AVPG1080 | 114 | 327 | 227 | 412 | 131 | 25A      | 37.5 | 240 | -   | 196 | 19.0 kPa |
| AVPG1100 | 114 | 327 | 238 | 434 | 141 | 25A      | 42.5 | 260 | -   | 207 | 20.3 kPa |
| AVPG1150 | 114 | 362 | 283 | 510 | 178 | 25A      | 61.5 | 320 | -   | 252 | 14.5 kPa |

# PRE-ACTION VALVE

Free action opened type valves maintain the secondary pipes dry, it can used on closed or open sprinklers and even spraying systems. It is a dry type valve that extinguishers fire and it doesn't require heat insulation to prevent the freezing of secondary pipes.

When the Vibrating valve inside the body goes off after detecting fire, Free action valve opens, and the extinguishing water reaches the secondary fire point through the open head, controlling the fire.

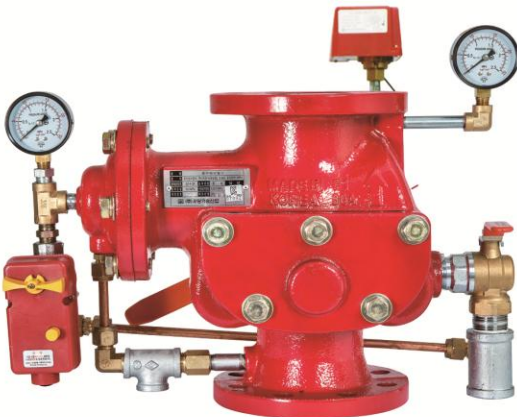


## Open Type(Pre-Action Valve)AVPV1 / AVPV2 / AVPG1

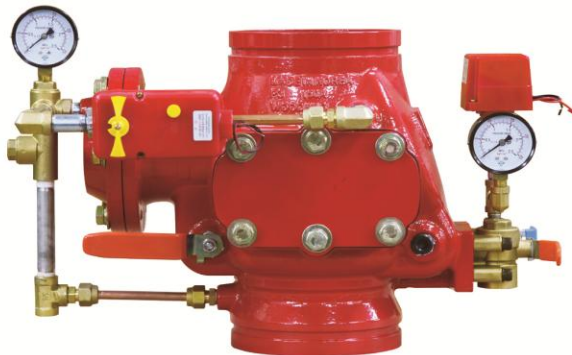
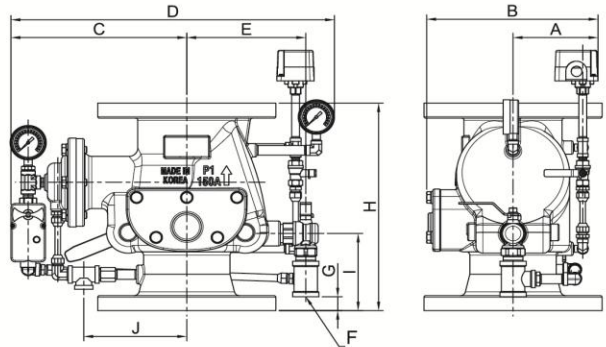
Korea Fire Institute inspection goods

### Product characteristics

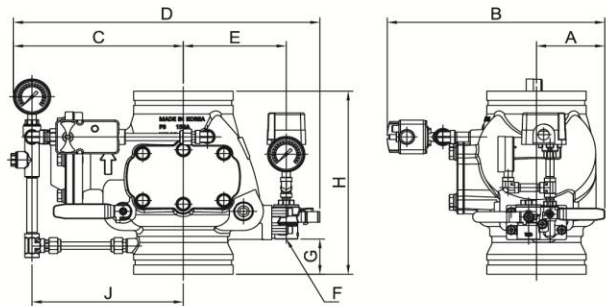
- The assembled structure absorb the water hammering and pressure shots to prevent malfunction with great sealing power
- The vibrating valves can open in case of emergency or when the fire detecting system vibrates, and it is easy to use since it concentrates the whole operation of opening the body in one place.
- It is designed as a swing type crepper minimizing internal friction



AVPV1 / AVPV2



AVPG1



| Model number           | AVPV1080~150   | AVPV2100, 150              | AVPG1080~150              |
|------------------------|--|----------------------------|---------------------------|
| Title standard         | 1MPa~80A~150A  | 1,6MPa~100,150A            | 1MPa~80A~150A             |
| Working pressure range | 0.15 ~ 1.4 MPa   | 0.15 ~ 2.2 MPa             | 0.15 ~ 1.4 MPa            |
| Connection standard    | KS B 1511<br>10K FF Flange   | KS B 1511<br>16K FF Flange | KS B 1507<br>Groove Joint |
| Operating method       | Krappier Swing   |                            |                           |
| Applied fluid          | Water  |                            |                           |
| Material               | Body, Krappier (GCD450 Dachtail castings)<br>Diafurem / Seat (NBR) |                            |                           |

| Model number | A   | B   | C   | D   | E   | F(DRAIN) | G    | H   | I   | J   | Pressure Loss |
|--------------|-----|-----|-----|-----|-----|----------|------|-----|-----|-----|---------------|
| AVPV1080     | 155 | 266 | 276 | 466 | 166 | 25A      | 9    | 304 | 123 | 147 | 14.4 kPa      |
| AVPV1100     | 155 | 266 | 276 | 466 | 166 | 25A      | 9    | 304 | 123 | 147 | 14.2 kPa      |
| AVPV1500     | 146 | 294 | 302 | 554 | 204 | 25A      | 25   | 374 | 139 | 172 | 4.6 kPa       |
| AVPV2100     | 155 | 268 | 276 | 466 | 166 | 25A      | 9    | 304 | 123 | 147 | 14.2 kPa      |
| AVPV2150     | 146 | 305 | 302 | 554 | 204 | 25A      | 25   | 374 | 139 | 221 | 4.6 kPa       |
| AVPG1080     | 114 | 327 | 227 | 412 | 131 | 25A      | 37.5 | 240 | -   | 196 | 19.0 kPa      |
| AVPG1100     | 114 | 327 | 238 | 434 | 141 | 25A      | 42.5 | 260 | -   | 207 | 20.3 kPa      |
| AVPG1150     | 114 | 362 | 283 | 510 | 178 | 25A      | 61.5 | 320 | -   | 252 | 14.5 kPa      |