

A grayscale image of a microscope, showing the objective lenses and the stage. The image is dark and serves as a background for the text.

ABSOLOGY

A solid orange horizontal bar.

ABSOLOGY

Company Profile



***Save More Lives,
Make Healthy Conditions.***

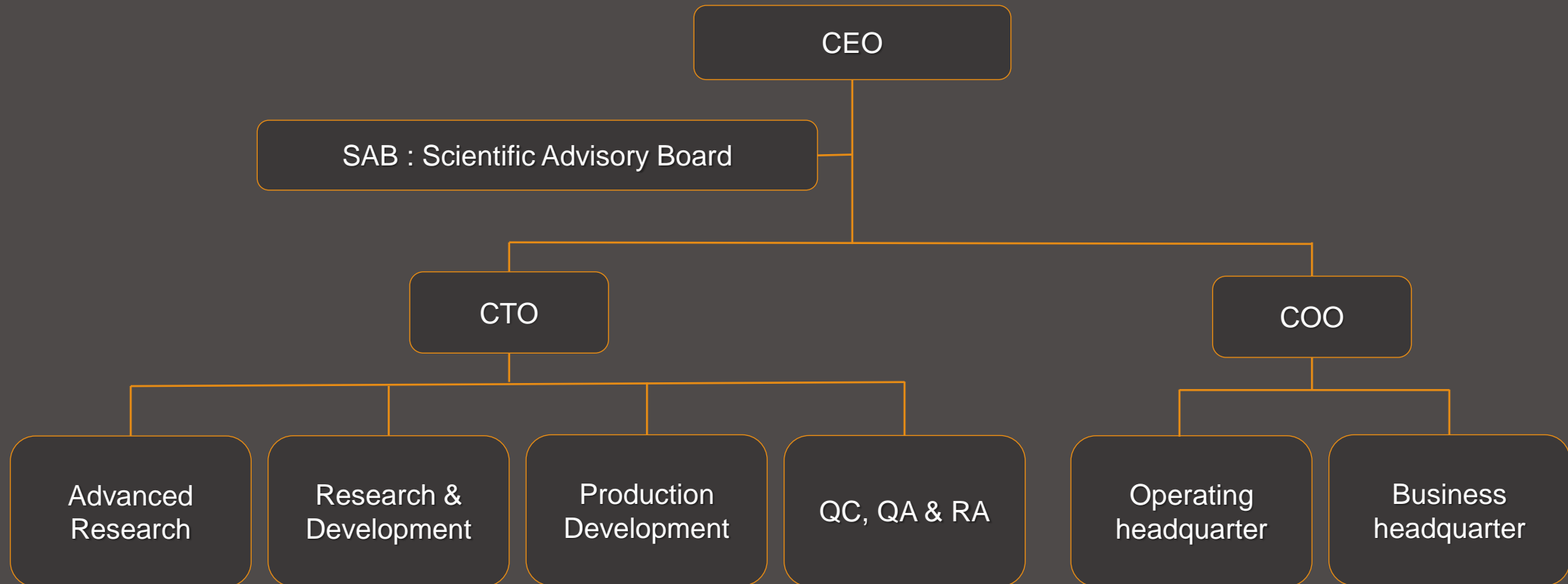
- **Company name; Absology Co. Ltd**
- **CEO; Hansang Jo**
- **Establishment date : March. 2017**
- **Product : In-Vitro-Diagnostic System (Reader & Reagent)**
- **Address : Digital empire B. Simin-daero 383. Dongan-Gu. Anyang-si. Gyeonggi-Do.
The Republic of Korea**
- **Employee : 24**
- **Home-page : www.absology.co.kr**

HISTORY

- **2017** ESTABLISHED
APPROVED AS A VENTURE COMPANY AND
ENTERPRISE INSTITUTE LICENSE
- **2018** MFDS APPROVAL OF ABSOL
- **2019** GMP CERTIFICATION
ISO 13485 & CE MARKING & MFDS
- **2020**

**SET OUT TO THE WORLD
IN SOUTH KOREA
SET THE NEW STANDARD**





POCT

ABSOL



Hormone, Tumor marker Monitoring

Low Signal & Competitive method Detection

FreeT4, TSH & Thyroid duo
PSA, Testosterone / Vitamin-D, PTH
Cardiac marker etc.

HS ELISA

ABSOL HS



Alzheimer disease Panel Focusing

Sensitive Cardiovascular disease detection

blood A β , blood Tau (Alzheimer)
Ultra Troponin-I etc.

➤ Make Healthy Condition

- Point-of-Care Immunoassay Analyzer with **Microfluidic technology**
- High Accuracy & Stability
 - **Active flow control** - on/off function with pressure to minimize errors from patient blood variations and tolerance of cartridge
 - **Built-in heating tray** to give the best condition for immune reaction
- Easy to use-No specialist knowledge required
- Test time: **5 minutes**
- **Duplex & Combination** Test available

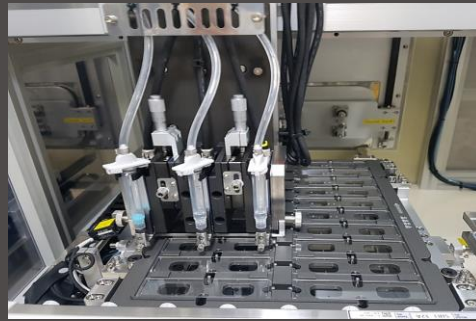


➤ Save More Lives

- Automated **High sensitive** ELISA system (detection to Femtogram level)
- High Accuracy & Stability (**PIFA Technology, Built-in heating tray**)
- Early diagnosis of **neurodegenerative** and **cardiovascular disease**
- Sample type: Serum, Plasma & **Exosome**
- Test time: 40 minutes
- Multi-throughput (under developing)

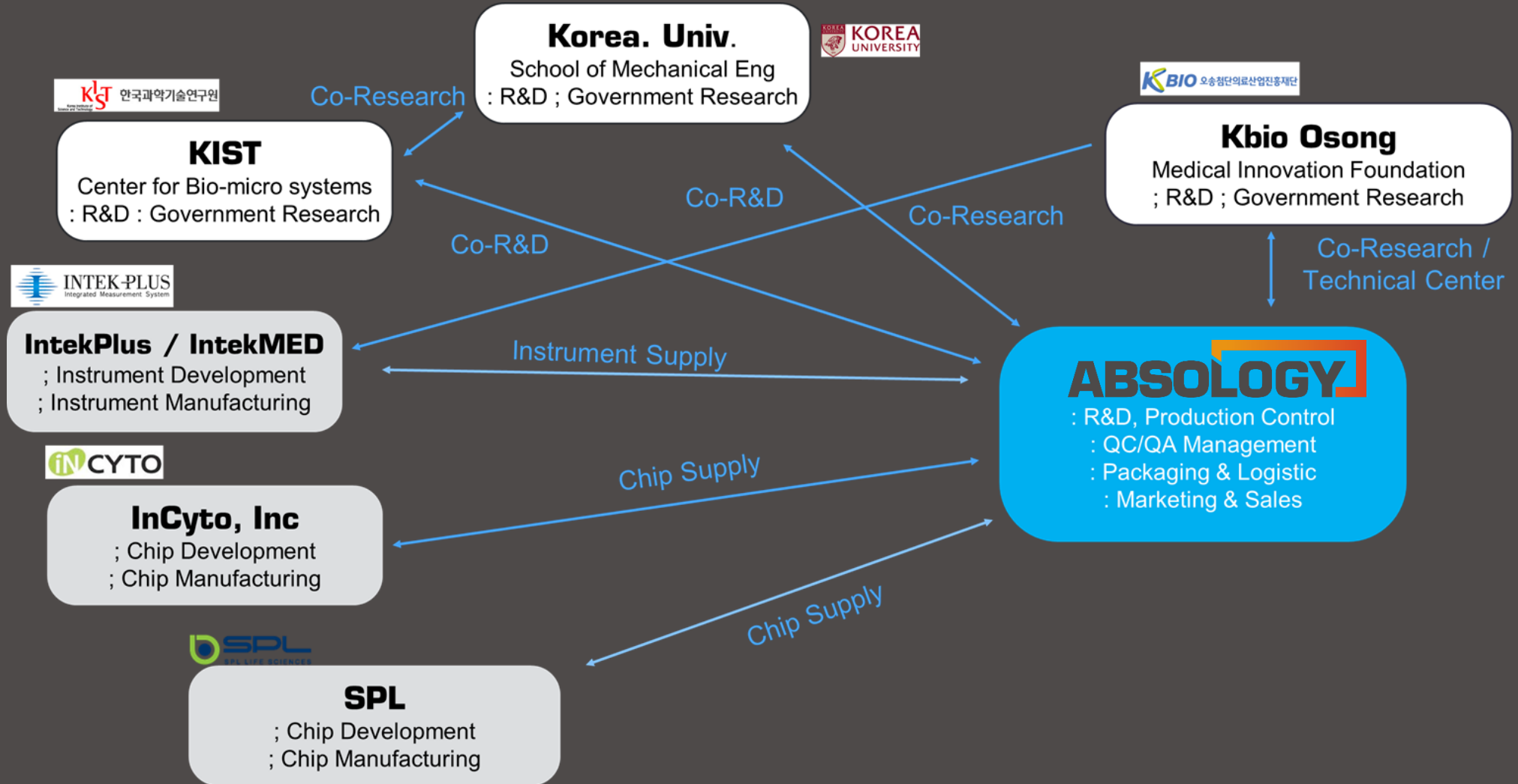


INTELLIGENT PRODUCTION



ABSOL		ABSOL HS
Cartridge	Reader	Cartridge & Reader
Nano crack channel structure InCyto (exclusive license) KR10-0998535 PCT/KR2009/001853 US 20160038941	Fluid velocity Detection & Control 1, 2 KR 10-1605653 (PCT/KR2015/006451) JP 2017-533531, CN201580069327.7, EP 15873420.2, US 15/518,288 KR 10-1605638 (PCT/KR2015/006453) JP 2017-533204, CN 201580069335.1, EP 15873421.0, US 15/518,073	Signal detection based on PIFA technology KR 10-2016-0039414, PCT/KR2017/003020 PIFA technology & Application KIST (exclusive license) KR 10-2016-0048235, PCT/KR2016/005278
Chip connect tech (Intekbio) KR 10-2018-0009341 Vent hole Structure (Intekbio) KR 10-2018-0009339 Back ground noise elimination (Intekbio) KR 10-2018-0009340	Optics placement Optimization 1, 2(Intekbio) KR 10-2017-0157955 KR 10-2017-0183699	

NETWORK





**THANK YOU
FOR WATCHING!**

ABSOLGY

ABSOLGY Co., Ltd.

1303ho, Digitalempire B-dong, 383, Simin-daero, Dongan-gu, Anyang-si, Gyeonggi-do, Republic of Korea

TEL. 82-31-348-8637 / FAX. 82-31-348-8635 / E-mail. sales@absology.co.kr / Web. www.absology.co.kr