

The background of the slide is a composite image. The upper right portion shows the wing and engine of a large commercial airplane in flight, viewed from a passenger's perspective. The lower left portion shows a dense urban skyline with various skyscrapers. A large, dark, semi-transparent geometric shape, resembling a stylized 'A' or a large triangle, is overlaid on the right side of the image. The title text is positioned on the left side, partially overlapping the dark shape and the city skyline.

Global **Health** and **Security** Management Solution

2020 K-safety expo



TRAVEL SAFE
TRAVEL WITH US



Table of Contents

Chapter ***I*** Introduction

Chapter ***II*** Features

Chapter ***III*** Services

Chapter ***IV*** Appendix

**ASSIST
CARD**

I. Introduction

Developing excellent solutions since 1972

Introduction

**ASSIST
CARD**

Global health and safety management solution

■ **Assistcard** : Established in Geneva, Switzerland in 1972, Assist Card provides overseas health, safety and insurance services to more than 10 million overseas travelers a year, international students, business travelers, and expatriates, as well as a variety of departing people.

■ **Security** : Health service means providing a comprehensive service including medical information and various consulting beyond post-transfer service or medical service.

Safety service is not only providing education and information for proactive response to various threatening situations encountered overseas, but also provide a professional support education, warning, evacuation plans against various risk factors - natural disasters, wars, terrorism, etc.

■ **Insurance services** : Insurance service means that we support the procedure steps from the beginning at hospital visit, such as searching clinic, reservation, billing, guarantee of payment, even documents and claiming.

We handle complex insurance-related tasks

Introduction

| History



9 alarm centers
located worldwide



10 million
clients per year



30 business centers
worldwide



1,200 coordinators
supporting 16 languages



Services in 190
countries and
17,000 cities



5 million cases
per year



71 regional offices
spread across 5 continents

1972



Founded in Geneva, Switzerland

1992



Launched corporate products for business travelers

2005



Established Assistcard Korea

2010



Started overseas emergency support service

2011



ASSISTCARD INT acquired by CV Starr Companies

2013



Incorporated as Asia HQ

2014



Partnership with Global security company, RED24

2016



Launched premium travel care products

2018



PyeongChang Winter Olympic emergency support service provided

2020



Launched COVID -19 infection solution



II. Features

Innovation in traveler assistance

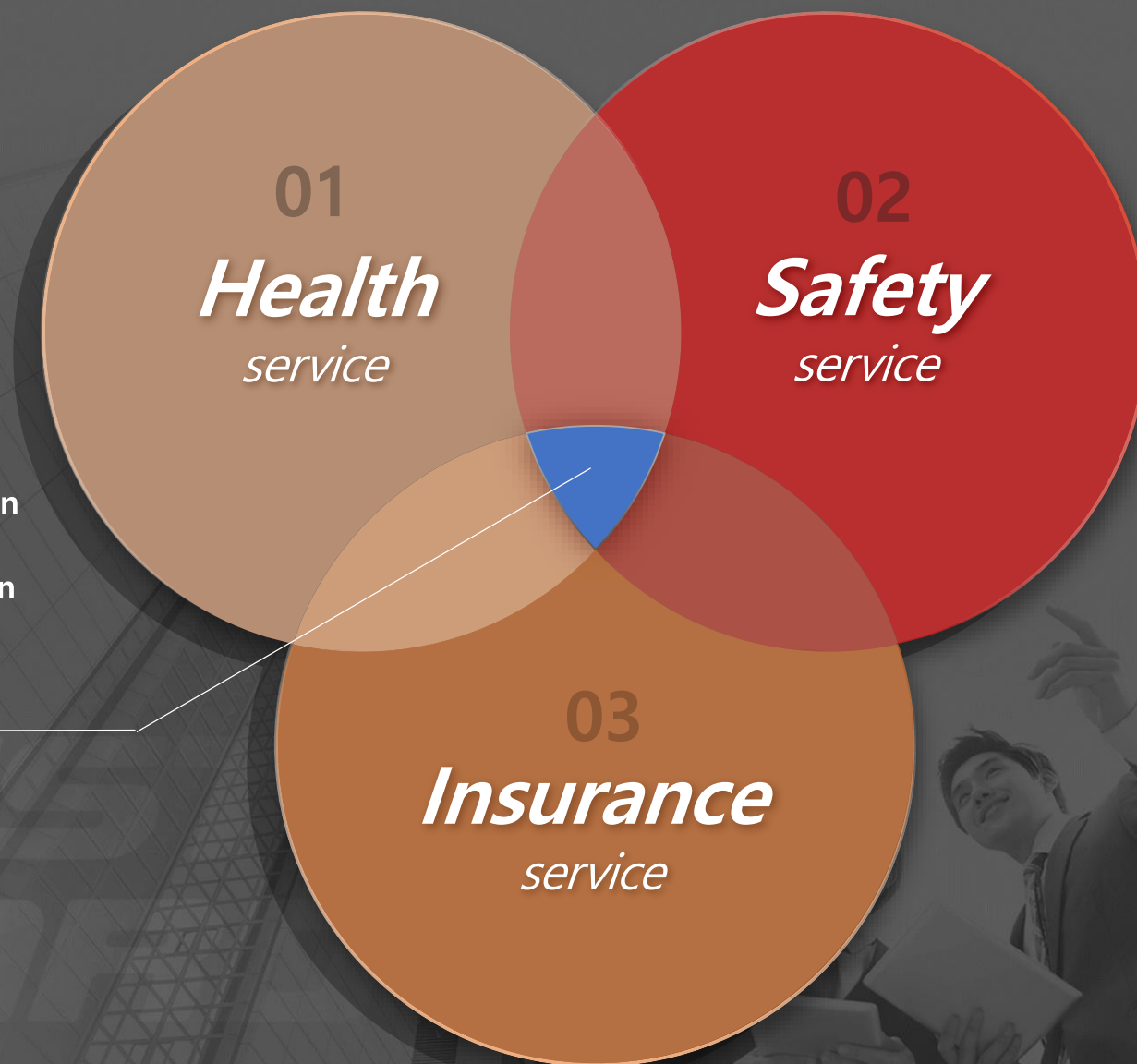


Features | A to Z Solution

Simplify your work.

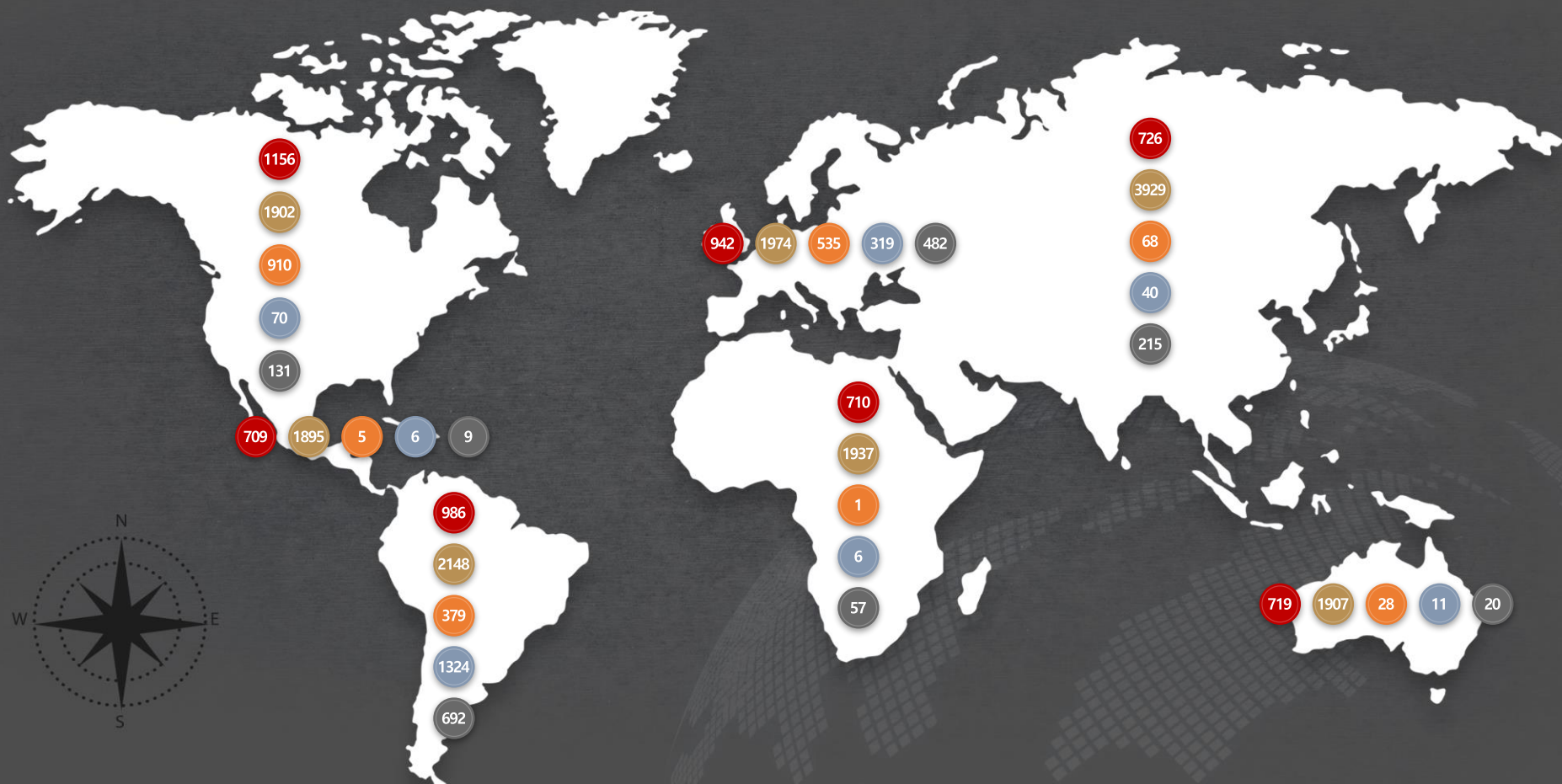
A to Z Solution

Practical performing service from reception requests, consultation, hospital use, treatment, and post-transmission, and then cost-related tasks and reports.



Features | Network (A)

Global health and safety management solution



5948

House Call
and Doctors

15692

Hospital
& Clinics

1926

Dentists

1776

Medical
Transport

1606

Support
Services

Features | Network (B)

Global health and safety management solution



Security centers located in each base around the world

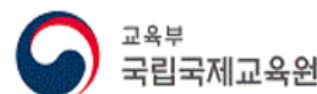
- | | |
|---------------------------|---------------------|
| ● Preparedness / Planning | ● HQ |
| ● Security Projects | ● Technology Office |
| ▲ Evacuation | ● Regional Office |

Features | Network (C)



Features | Key Accounts

Global health and safety management solution



**ASSIST
CARD**

III. Services

Convenient and practical services

Global Health and Safety management solution

01 **Health (Medical services)**

If you need medical services due to illness or accident abroad, we provide support for all possible situations abroad. Such as work for searching clinic information, hospital reservations, payment for hospital expenses, and medical certificates, prescription reading. Furthermore, hospitalization or medevac services due to a major disease or infectious disease such as corona.

02 **Safety (Security services)**

Provides education and information for proactive response to various threatening situations that may be encountered overseas, which means that we support the whole process, such as preparation and response to unstable situations abroad, from education, warning, evacuation plans, and actual transportation to all possible risks that may occur locally - natural disasters, wars, terrorism, riots, etc.

03 **Insurance services**

We support for Bills payment, documentation work, Cashless service and claim.

Organizing hospital visit including reservation for a nearby hospital or transfer service to an advanced facility nearby according to the circumstances

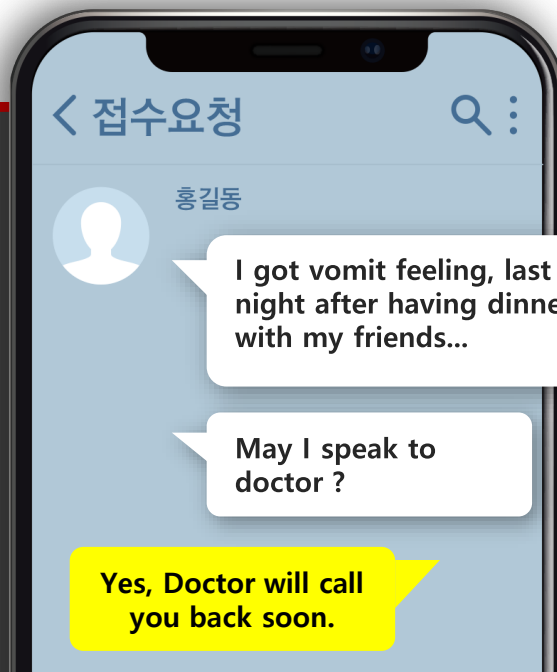
Clinic / Hospital



Medevac



Medical advice and consultation, medicine guidance, medical monitoring,
via application, phone, or email



Prescription						
Name	choi ye young		Sex	F	Age(Month)	48(3)
Issue Date	2020.08.17					
Diagnosis	adhesive capsulitis, underlying IDA & hyperthyroidism					
Medicine	Name of Medicine		Each time	Times /day	Total days	
	Mefenison (Doroly) Tab 250mg		1	2	7	
	Diclofenac (Voltaren) Tab 50mg		1	2	7	
	Omeprazole (Erbaw) Cap 20mg		1	2	7	

Can I have any advice for this prescription?



This is X-ray with my lungs, and I need doctor's opinion, or any recommendation.

Health | Counseling

ASSIST
CARD

Global health and safety management solution

Provides regular/irregular **psychological counseling services** to manage stress such as anxiety, depression, and other stress that may occur to those who are staying for a long time or working in the unpredictable environment of overseas.

+ CASES



I'm working overseas by myself. I was married and didn't have any birth plans.

I have been bleeding irregularities for nearly a month. I'm worried.



Hello, recently I'm depressed.. My chest keeps feeling stuffy.. I can't sleep well.. I want to receive psychological counseling..



Neither returning home nor living in the country is predictable due to the coronavirus. Sooner or later, my wife is about to give birth in Korea...

I have a fever and a cough.

Safety | Alert service (a)

Global health and safety management solution

A service that provides real-time information on issues that may pose a risk to personal safety, such as various crimes, unrest, terror, kidnapping, earthquakes, typhoons, and infectious diseases that can occur in various places abroad



E-mail Alerts



Safety | Alert service (b)

Global health and safety management solution

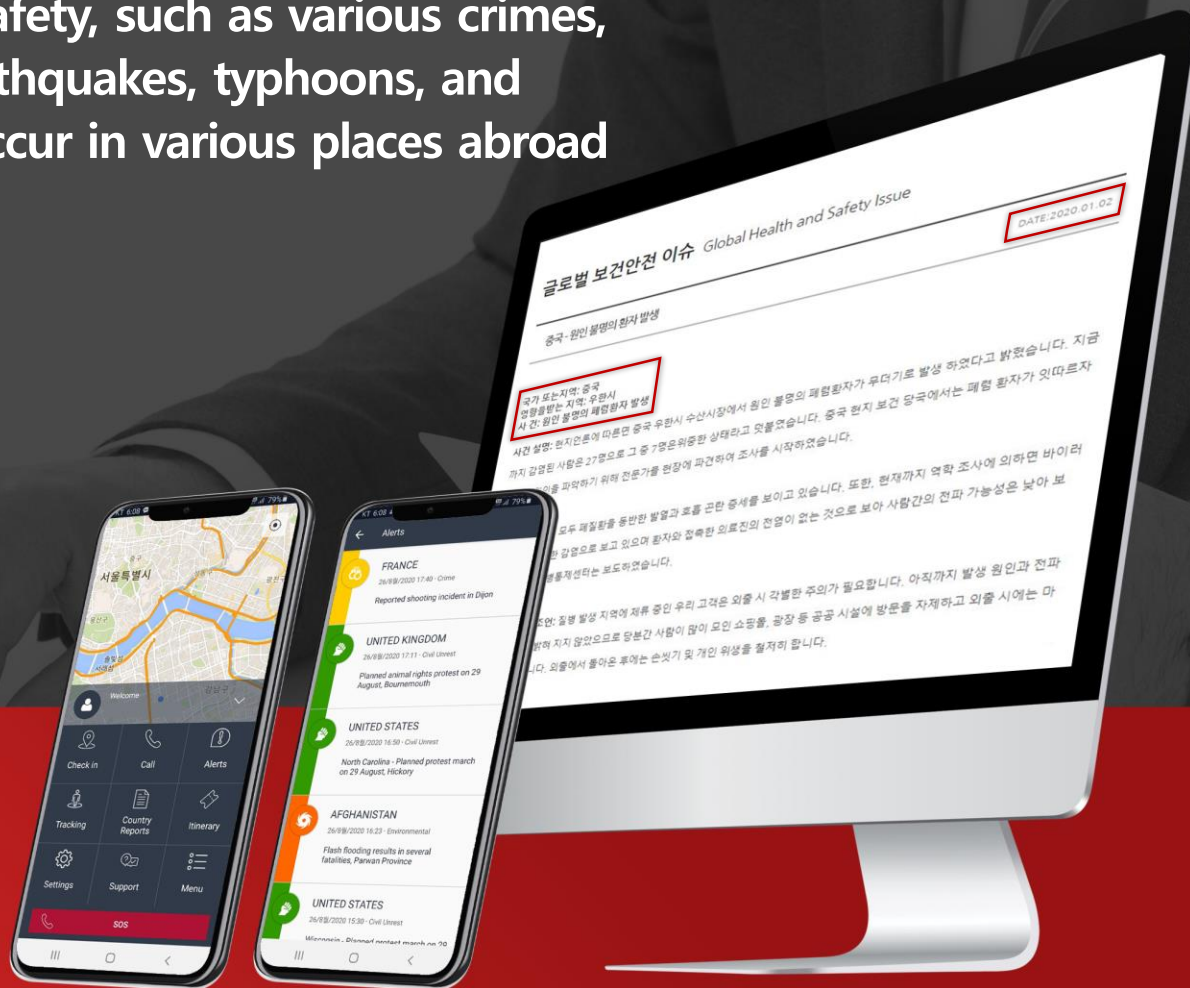
A service that provides real-time information on issues that may pose a risk to personal safety, such as various crimes, unrest, terror, kidnapping, earthquakes, typhoons, and infectious diseases that can occur in various places abroad



App Alerts



Daily News



Safety | Customized advisory service

**ASSIST
CARD**

Global health and safety management solution

Before business trip,

Site investigation

When a project requires a preliminary survey on the site

When an issue occurs,

Special Report

Detected any risk factors or report on your request

Investigation team

Local dispatch

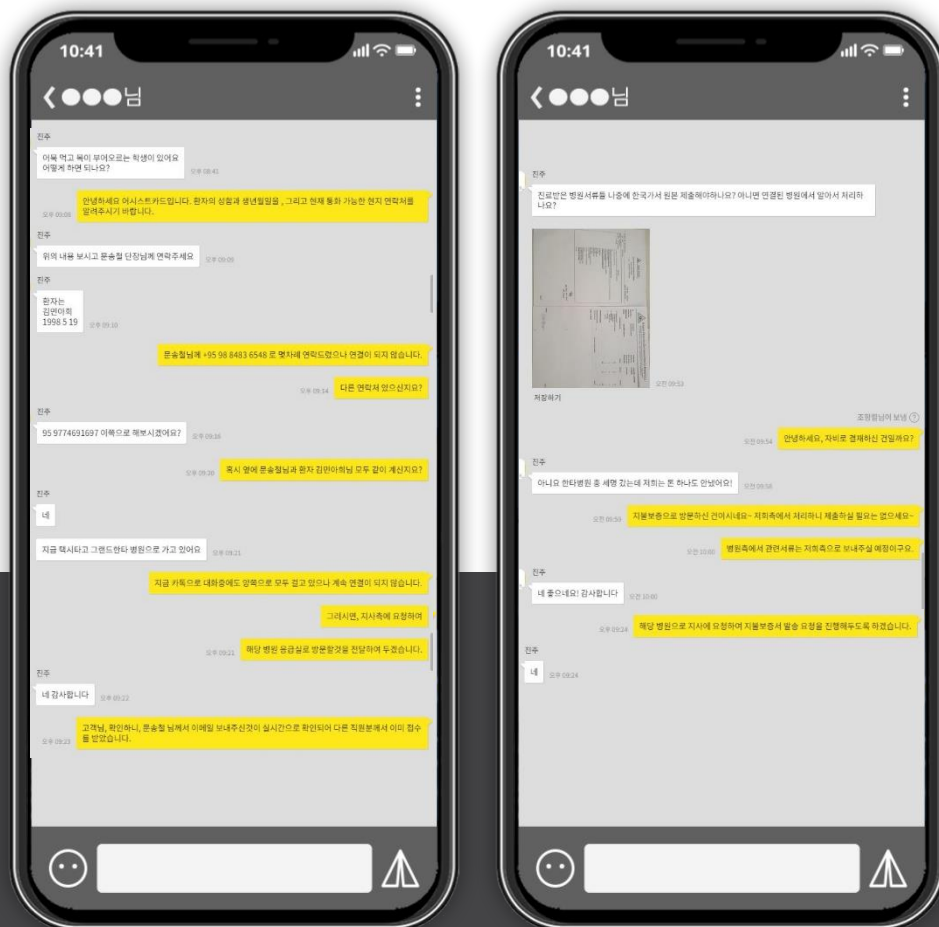
In the event of a local security incident

Emergency plan

Evacuation

Consulting on emergency escape routes and schedules

Insurance service



From A to Z Simplify your business

Unified service system - from service request / to insurance service
Improves service convenience with low service hurdles due to various reception channels

Manpower safety management of the client,
Professional services in managing insurance costs,
Simplified procedure due to unified procedure
Practicality of services applied in practice

Appendix | Training with Certificate

**ASSIST
CARD**

Global health and safety management solution

Training (online program)

Education on health and safety is provided through a dedicated website and certificates are issued.



Training (face to face)

Dispatch professional manpower in charge to conduct an hour and 30-minute education on health, safety, and service.



Training (videophone)

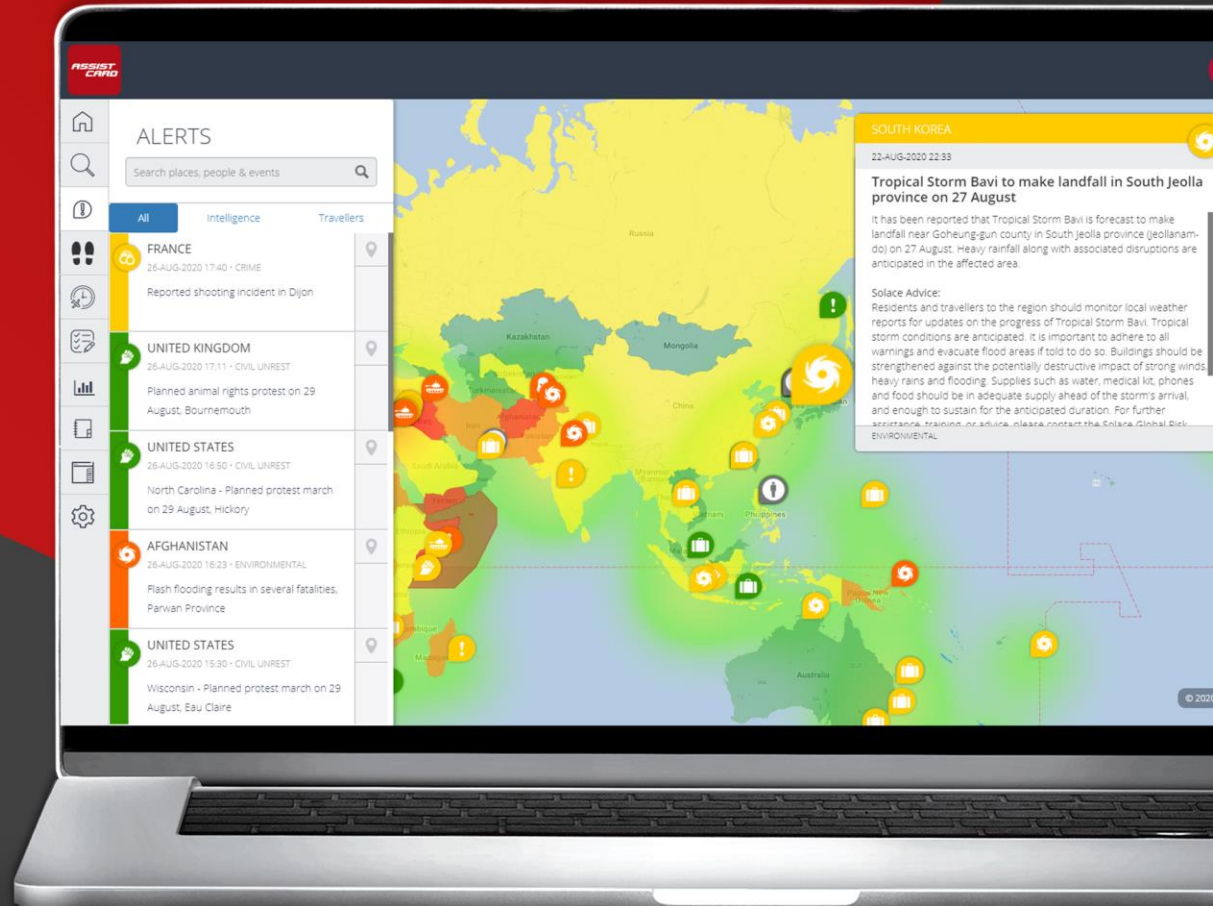
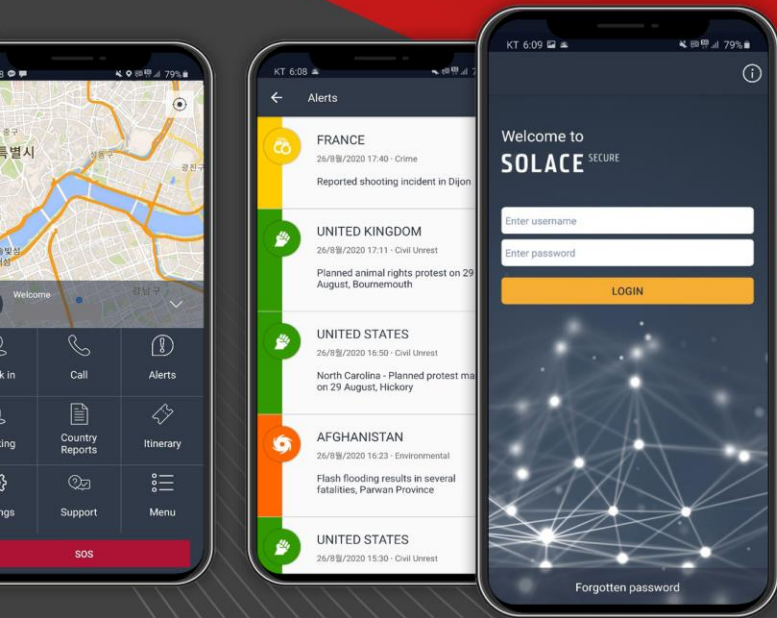
In situations where face-to-face education is not possible or for those who have already left the country, education and question-and-answer of experts in charge of health, safety, and service are provided.



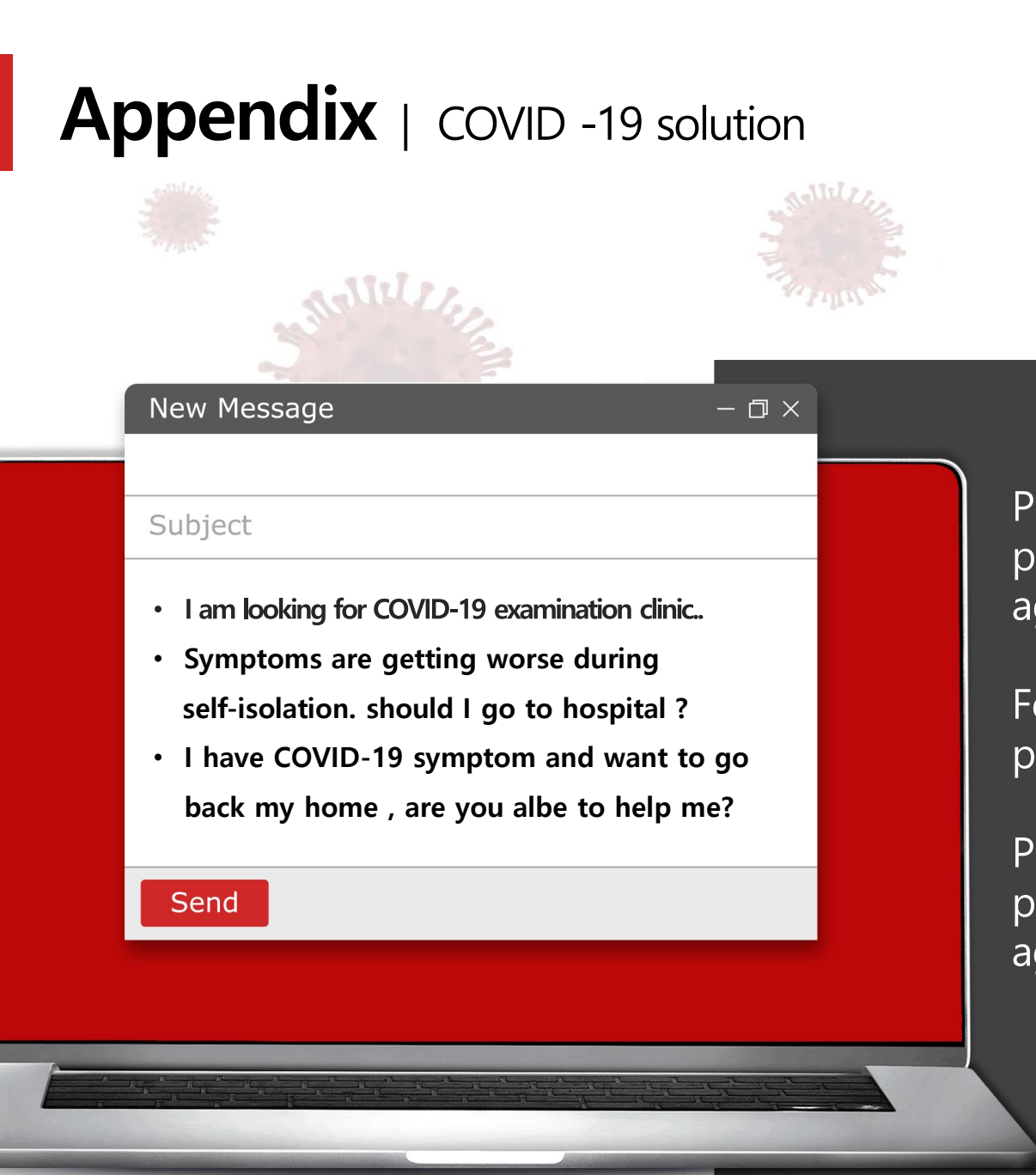
Appendix | APPLICATION (SOLACE SECURE)

Global health and safety management solution

Threat/security/safety-related alarm system based on GPS or the departure date and the location of the airport, and the arrival date and the location of the airport.



Appendix | COVID -19 solution



New Message

Subject

- I am looking for COVID-19 examination clinic..
- **Symptoms are getting worse during self-isolation. should I go to hospital ?**
- I have COVID-19 symptom and want to go back my home , are you albe to help me?

Send

Provides medical support and psychological counseling against corona anxiety

For dangerous situations, provides medevac

PITCO® Product has been programmed as a countermeasure against COVID-19



Thank you

2020 K-safety expo



TRAVEL SAFE
TRAVEL WITH US