

Introduction for SOMO IR

SOMO Group - Overview



Outline

Foundation : June 19th, 1968

SOMO Group Sales(Y2017) : USD172Mil.

SOMO Group Employees : 1,109 staffs

SOMO Energy & Technology Sales(Y2017) : U\$87Mil.

Affiliates

SOMO Energy & Technology

SOMO VISION

SOMO Petroleum (GS Caltex)

Sungam Industrial (POSCO)

IR & VISION Business



Ophthalmic Plastic Lens Business



Transportation Business



Oil Storage & Distribution



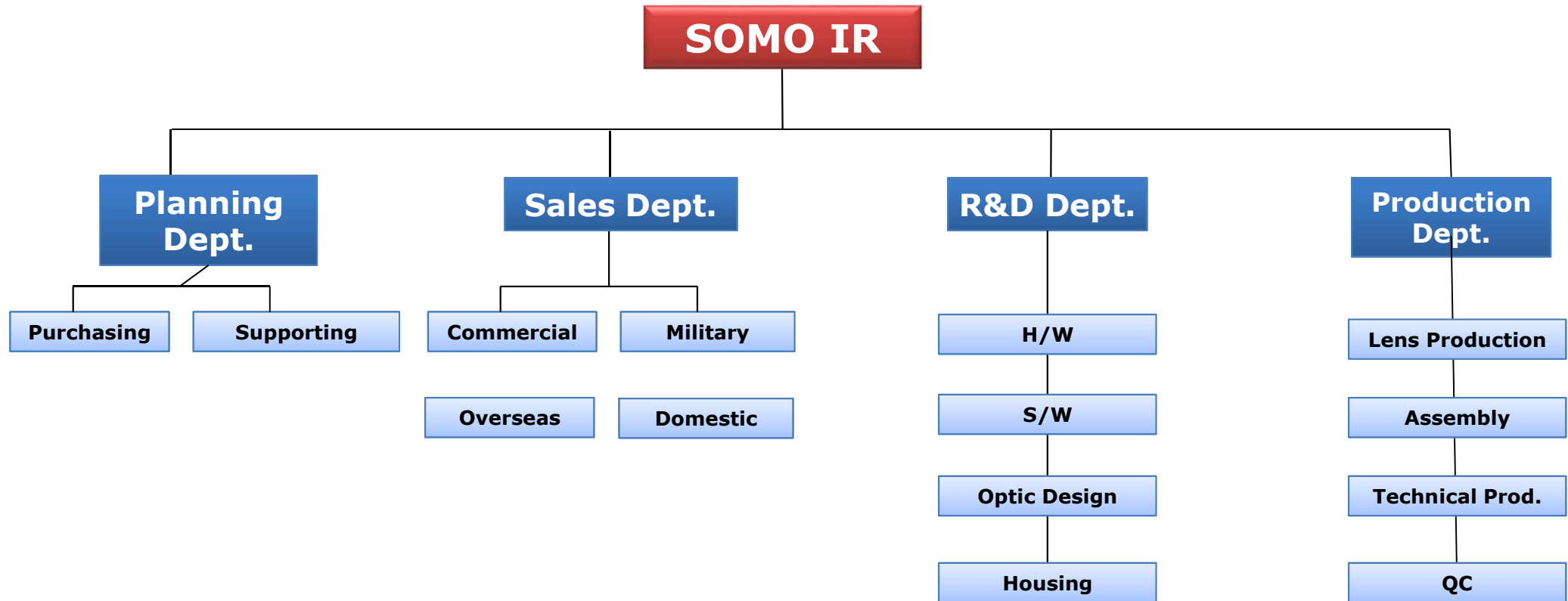
SOMO Group - Location



SOMO IR – Damyang Factory



- Molding lens & IR camera system production line completed in 2013 (11,000 m²) ► 1st in Korea
- Design/Molding/DTM/Cleansing/Coating/Assembly/Testing etc.
- Clean room facilities(1,600 m²)
- Secured area for production capacity expansion (6,600 m²)



SOMO IR – Unique Selling Points

Proprietary Technology

IR Design/Lens/Module/
Housing, **Total Technology**
for Infrared Market
(Commercial, Military)

Molded Lens

World Class Technology for
Molded Lens and strategic
relation with SCHOTT

Fusion

**Qualified DVE System &
1 way Optic Mechanism**
(World First)



Effective Detector

Micro-bolometer
Detector ;**high performance**
and easy to **re-export**
Adapted(80, 320, 640)

Customized Solution

Easy to be customized as to
operating circumstance in
customer site.(FOV, Size,
Weight, Interface etc.)

Infrared Expert

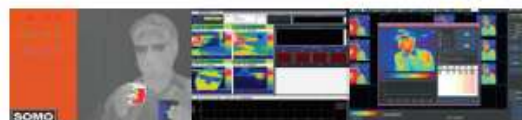
Highly trained technicians
working for design/lens/
electronics/housing/
inspection etc.

Thermography Series

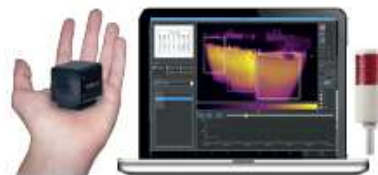


01 FEATURES

- Thermal Image & Temperature Monitoring
- Short / Middle Range Surveillance / Before Fire Detection
- Compact Size / High Accuracy / Low Consumption
- Detection Range(option) : 84m / 34m
- Temperature Accuracy : $\pm 2^{\circ}\text{C}$ or 2%
- Analog or Digital / Ethernet



Temperature Monitoring (Multi Channels)

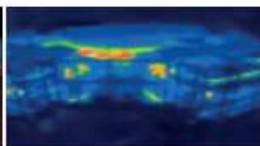


Thermal Imaging Camera

02 APPLICATIONS



Temperature Monitoring



Facility Monitoring



Invasion Detection

03 SPECIFICATIONS

Array Size	80x80(Pixel Pitch : 34 μm)
Frame Rates	30fps
Output	Analogue / Digital / Ethernet / Onvif
Time to First Image	≤ 2.0 Sec.
Power	Input Voltage(DC 5V, 1A), Consumption($<2.5\text{W}$)
Radiometric Accuracy	$\pm 2^{\circ}\text{C}$ or 2%
Optics(HFOV)	21 $^{\circ}$ ($\pm 1^{\circ}$), 58 $^{\circ}$ ($\pm 1^{\circ}$)
Degree of Protection	IP67

Thermography Series



Explosion Proof Series

Fusion Series

(Thermal & Visible)



1 IN 1

2 IN 1

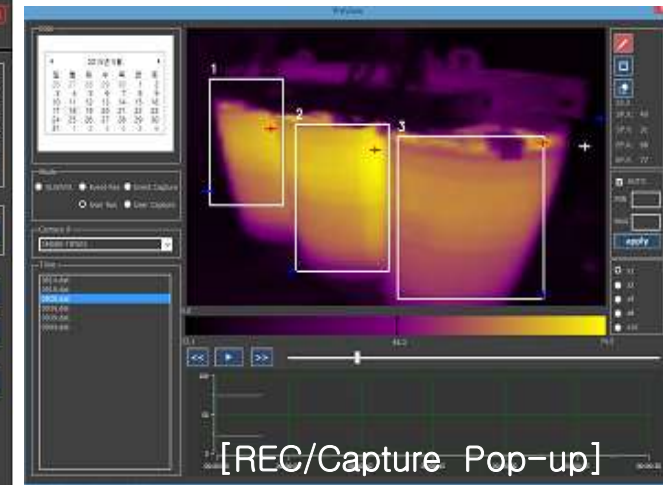
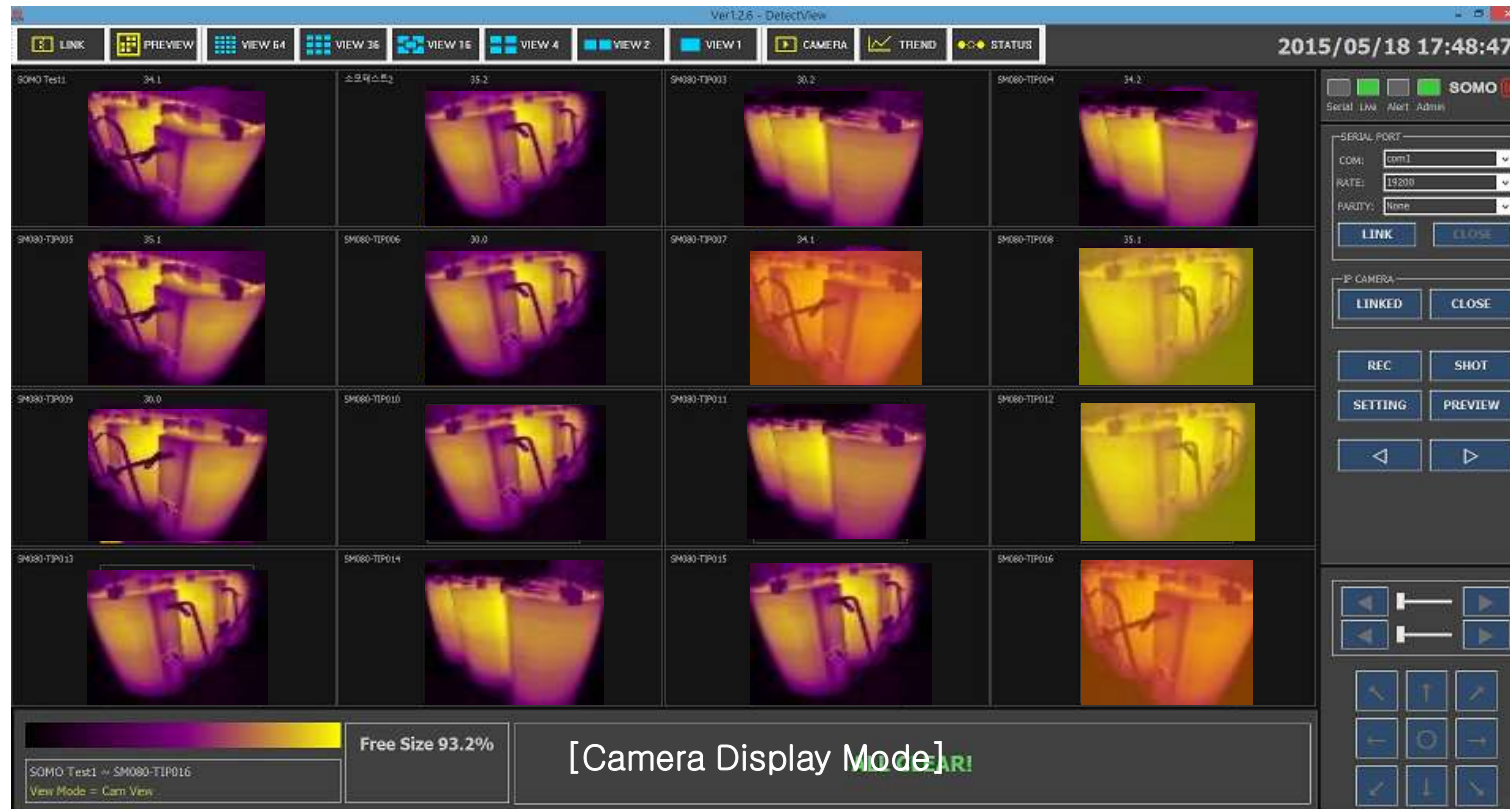


Center Fusion

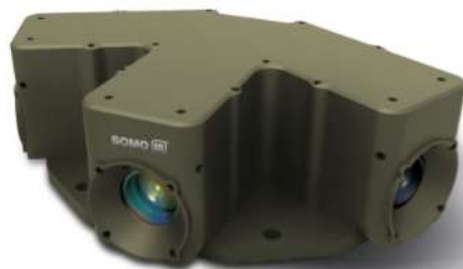


3 IN 1

➤ SM080-TIP (Multi Channels S/W)



SOMO Fusion Camera



See the Invisible



Visible



Fusion (IR + Visible)



Visible



Fusion (IR + Visible)



SM640-WF2



SM640-SF1



SM640-CF1

Benefit by SOMO Fusion cameras

- ✓ Enhanced vision for Surveillance and Driving
- ✓ Effective Surveillance and Driving in the rain
- ✓ Figure out the object even in shadows



COMPREHENSIVE APPLICATIONS



HOSPITAL



FINANCE
COMPANY



MALL & OUTLET



PLANT



RETAIL



HOTEL &
BUILDING



POWER
STATION



LAB



MILITARY



PETROL STATION



OFFICE



AIRPORT

Contact



Mr. James Park / Sales & Marketing

- Tel : +82-2-3450-6868
- Mobile : +82-10-2994-8775
- E-Mail : james6@somogroup.co.kr

Location / HQ

- 5F SOMO Bldg., 984-1 Daechi-dong, Gangnam-gu, Seoul, Korea

Location / R&D, Production Lines

- 574-841, Mujunggongdangil6, Mujungmyun, Damyanggun, Jeollanamdo, Korea